

# Lamberhurst Parish Neighbourhood Plan

## What is a Neighbourhood Plan?

It is a document created by **local people** that sets out planning policy for where you live. It helps you protect the things you care about in your community, such as important local green spaces, as well as make improvements to the local area. For example, it can show where buildings can and can't be built, what they should look like, and used for. It can also encourage the kind of development that you would like to see more of.

## Why a neighbourhood plan might help?

A neighbourhood plan carries the same legal weight as plans drawn up by your borough council. This means it gives you and your community a powerful voice that must be listened to when decisions are made about development in your area. For example, your borough council must follow what's in your neighbourhood plan when making decisions about planning applications and developers or landowners must follow it if they want to get planning permission.

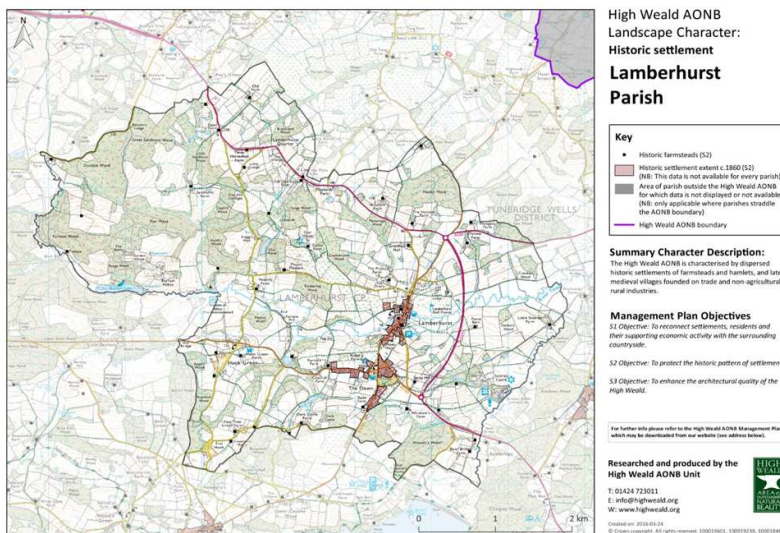
## Key steps completed:

1. Get agreement from residents to develop a Neighbourhood Plan.
2. Set up a group linked to the parish council to take this forward.
3. Register your neighbourhood plan area (generally the civic parish).
4. Apply for funding to support the process by engaging with consultants

## Key steps to do:

1. Engage and consult with residents on what to include in the Neighbourhood Plan – generally through a survey and workshops.
2. Write and then consult on a draft Neighbourhood Plan.
3. Have the Plan 'examined' by an independent expert to ensure it complies with legislation.
4. Hold a referendum at which every resident (18 and over) gets a vote on whether they agree the plan.
5. The plan is 'made' and becomes part of the overall development plan for Tunbridge Wells District.

## Lamberhurst Parish Neighbourhood Plan Designation Area:



## **How will we be able to engage with the community?**

Steering group and sub-groups: to oversee the work carried out on behalf of the community through the neighbourhood planning process

All are welcome to come to the meetings and participate at anytime or join a sub-group

- their role is to make every effort to gather and understand views expressed by individuals and groups and respond clearly to matters raised
- Collect information and data to support the development plan in a transparent way unless it is provided as commercial confidence or with other caveats
- Facilitate periodic meetings that are open to the public to ensure opportunity for members of the public to engage
- Make regular press releases will provide activity updates on the website and through the other medium areas available
- Be engage on as many levels as possible with the local community enabling a change in strategy if required

## **What are the sub-groups?** (these may be subject to change dependent on circumstances)

Sub-groups are set up to gather evidence on specific issues that the Parish wishes to tackle these are:

- Communication Support
- Business and Tourism
- Housing
- Community Facilities and recreation
- Environment and Open Spaces
- Design Guidance

## **How else will we be able to communicate with Lamberhurst Parish Community**

- Lamberhurst Parish Website
- Email to send information in or make contact with the steering group: [lamberhurstplan@gmail.com](mailto:lamberhurstplan@gmail.com)
- Articles in the Parish Magazine
- Community workshops and events: Please watch out for these events without your feedback we cannot have an effective Neighbourhood Plan

**If you want to participate in any of the sub-groups or as part of the steering group all are welcome to join, please contact David Hurst-Brown on [david.hurstbrown@gmail.com](mailto:david.hurstbrown@gmail.com)**

## **What is the role of Lamberhurst Parish Council?**

Lamberhurst Parish Council is the Qualifying Body under the Act and has established an **Lamberhurst Parish Community Engagement Group (LPCEG)** to steer the NP process and enable the community to develop policies for consultation and eventual consensus. The Council retains decision-making powers for the policies, the budget and the selection of those involved in the process, supporting LPCEG by:

- Liaising with partner organisations, including Tunbridge Wells Borough Council
- Support funding opportunities
- Ensure that key information is maintained on the Parish website

## **How do we ensure that we can achieve a positive result?**

For all of us to get as much out of the process as possible we will try and follow the five rules of engagement and we hope that our Lamberhurst Parish Community will share them to:

- **SHARE AND DISCUSS IDEAS WITH ALL 'LOCAL PEOPLE' AND STAKEHOLDERS EARLY:** When working with multiply stakeholder groups there must be constant communication. Identifying concerns early will help with a smooth transition
- **COMPROMISE:** A range of views and interests can be expected. To ensure a secure consensus there has to be compromise
- **UNDERSTAND ALL 'LOCAL PEOPLE' AND STAKEHOLDERS PERSPECTIVES AND CONSTRAINTS:** try to understand the different requirements and constraints on, 'local person' and stakeholders and ensure that we tackle these issues upfront and with integrity
- **DO NOT BE OFFENDED:** Not everyone is going to agree with every issue. Constructive criticism and support will ensure a better Neighbourhood Plan.
- **BE PROACTIVE NOT REACTIVE:** Do not be afraid to put proposals forward **EVERY VIEW COUNTS.**

**Communication** is the heart to the Neighbourhood Planning process and we want all your views to be considered so please ensure that you:

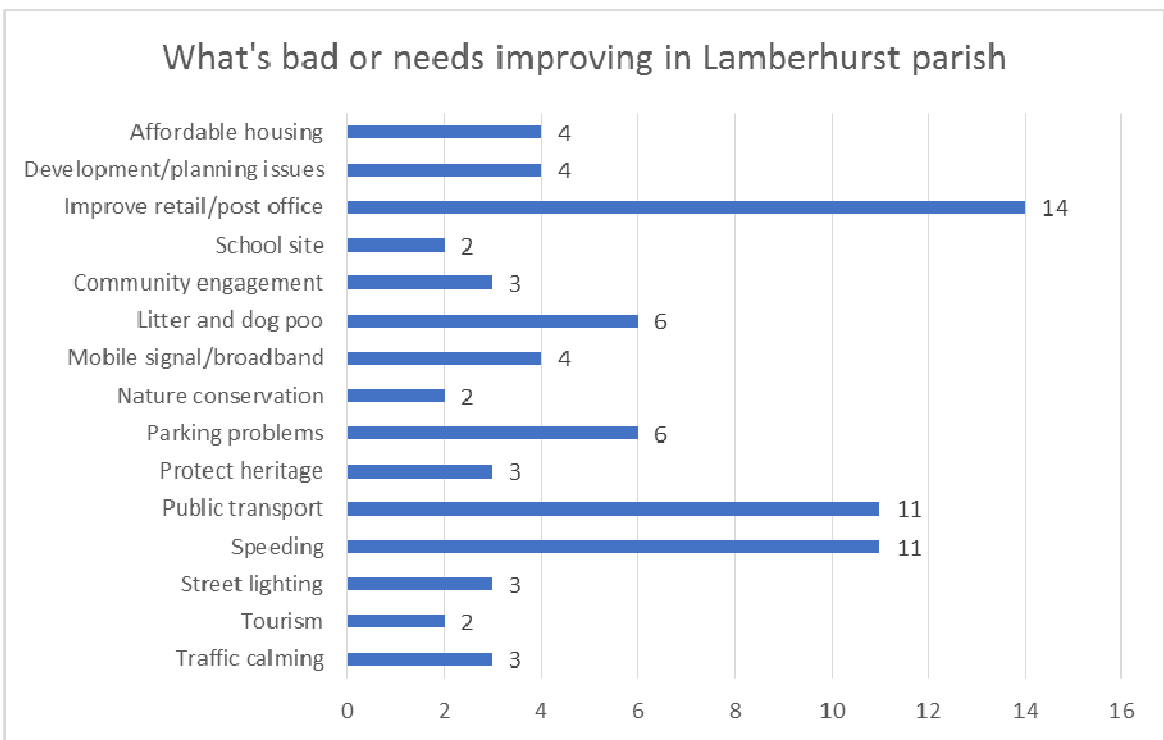
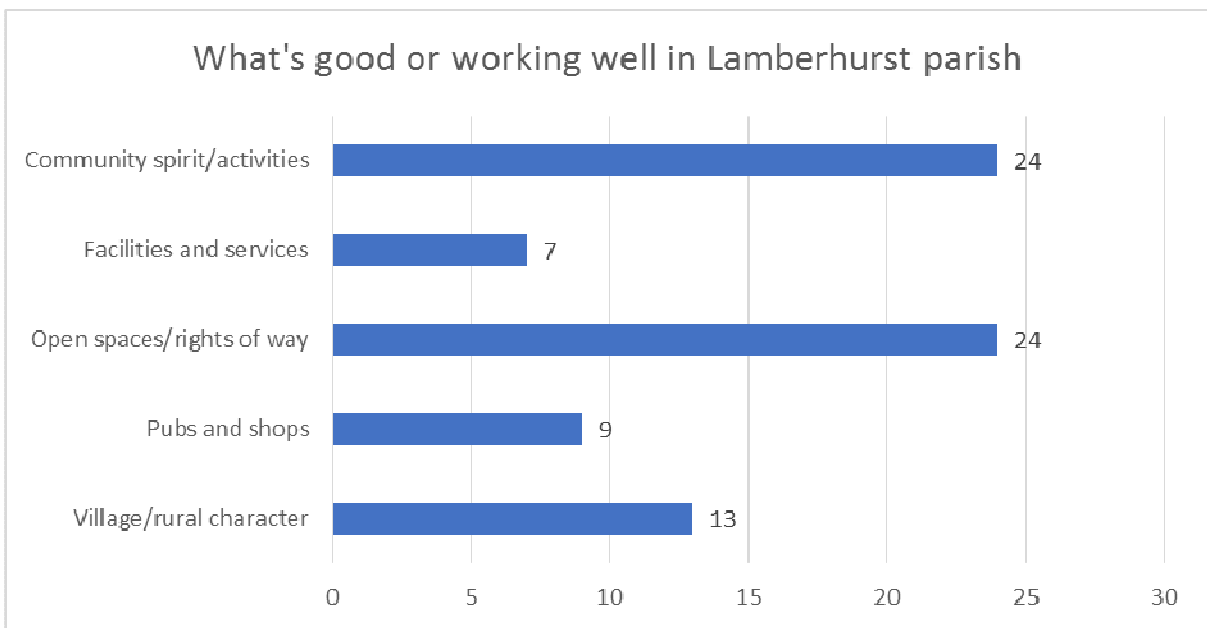
- Give us your views
- Get involved

Help us to make sure that Lamberhurst Parish will be the vision you want it to be for your family and friends in the future.

From the initial meeting in April 2016 a meeting was held and these are the results of a participative exercise:

**Key sustainable issue that were highlighted are:**

- Retain historic buildings and green spaces that are valued by local and wider community
- Maintain a village with a strong multi-generational resident base
- Maintain AONB status and encourage visitors to enjoy the village more
- Negative comments included:
- School site is small therefore limit growth with this in mind.
- encourage an environment for more local businesses
- Only one local shop
- Lack of affordable housing for young people - the new life blood of our community. Empty buildings on the Riverside.



## Initial gathering of VISIONS included:

- Retain historic buildings and green spaces that are valued by local and wider community
- Maintain AONB status and encourage visitors to enjoy the village more
- To continue to have a "sense of place", strong community with school and community facilities.
- Sustainable community, minimum impact on environment. Health happy space - walkways, cycling, safe places for children and looking after the elderly
- A place I still want to live in in 2033 and my family can too

